

University Hospital Aintree Emergency Department Monthly Bulletin: August 2010 to July 2011

This bulletin provides a breakdown of all attendances¹ at University Hospital Aintree Emergency Department (ED) between August 2010 and July 2011.

From August 2010 to July 2011, there were 84,635 attendances to University Hospital Aintree ED and May had the highest number of attendances (n=7,297). February had the lowest number of attendances (n=6,500).

There were a similar number of male and female attendances (males; 50%, females; 50%) to Aintree ED (**Figure 1**). **Figure 2** illustrates age group of ED attendances for each month. Nearly all (99%) ED attendances were aged 15 plus. This is probably due to the close proximity of a local children's ED (Alder Hey).

In four-fifths (80%) of attendances, injury group was recorded as other/unknown. This group includes ED attendances that are not injury related, such as heart attacks. Of those injury groups recorded, falls accounted for 10% of attendances, assaults accounted for 3% of all injury attendances, road

traffic collisions (3%) and sports injuries (2%) (**Table 1**).

Table 2 shows the location of the incident of attendances. Over three quarters (76%) of incidents took place in the home, 11% in a public space and 3% in work. The primary location for falls was the home (54%) (**Table 3**) and the primary location for assaults was in a public space (51%) (**Table 4**)

Table 5 shows the arrival method of attendances at University Hospital Aintree ED. Almost half (47%) used private transport whilst 36% arrived by an ambulance.

The disposal of a patient can give an indication of the severity of injuries sustained. Almost four in ten (37%) of ED attendees were admitted to hospital while 29% were discharged. (**Table 6**).

Assaults

During August 2010 to July 2011 there were 2,308 assault attendances to University Hospital Aintree ED. Assault attendees presenting at University Hospital Aintree ED between August 2010 and July 2011 were primarily male (74%) and aged 15 - 29 years (54%).

¹ For other EDs, TIIG reports on injuries only. However, this report includes all attendances at Aintree ED. This is due to the high number of 'unknown' injury groups amongst attendances at Aintree ED which makes it difficult to analyse injury attendances separately.

Figure 1: Gender of ED attendances by month, August 2010 to July 2011

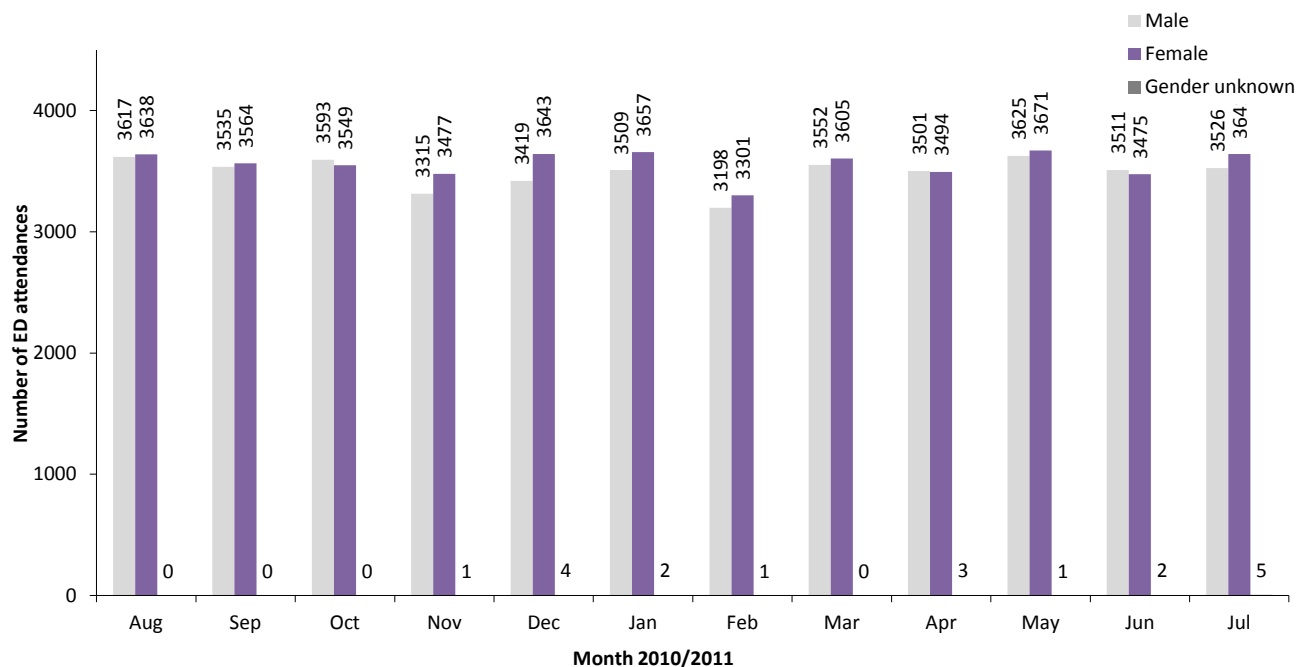


Figure 2: Age group of ED attendances by month, August 2010 to July 2011

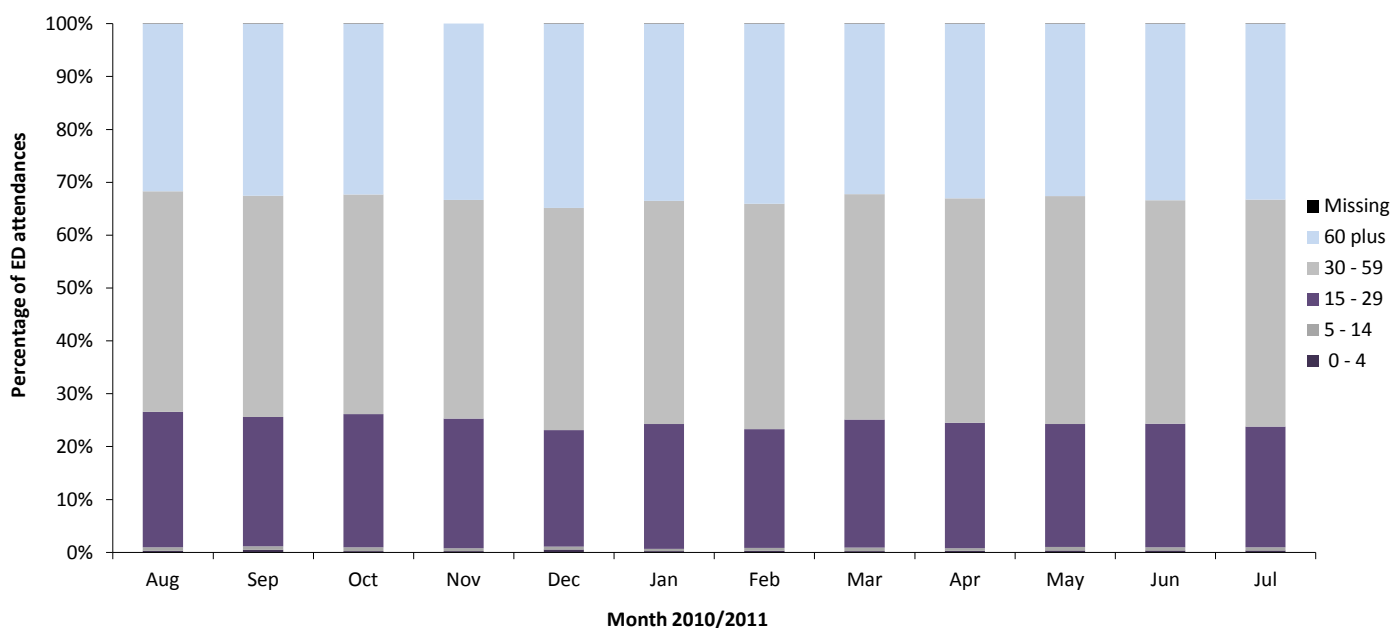


Table 1: ED attendances by injury group and month, August 2010 to July 2011²

Injury group	Aug	Sep	Oct	Nov	Dec	Jan	Feb	Mar	Apr	May	Jun	Jul	Total	%
Other/unknown	5671	5625	5603	5426	5403	5813	5312	5799	5707	6049	5796	5842	68046	80
Fall	819	703	744	708	1128	739	620	669	647	658	648	753	8836	10
Assault	232	201	213	164	168	228	177	185	197	180	182	181	2308	3
Road traffic collision	233	228	241	231	243	161	174	187	143	131	135	175	2282	3
Sports injury	152	195	184	131	33	114	122	170	159	142	113	107	1622	2
Deliberate self-harm	146	143	154	127	89	112	92	146	139	130	111	109	1498	2
Firework	***	***	***	<7	***	***	***	***	<7	<7	***	***	<40	0
Brought in dead	***	***	***	***	***	***	***	***	***	***	***	***	***	0
Total	7255	7099	7142	6793	7066	7168	6500	7157	6998	7297	6988	7172	84635	100

²Please note that all numbers less than five have been suppressed in line with patient confidentiality and if there is only one number less than five in a category then two numbers will be suppressed at the next level in order to prevent back calculations from totals.

Table 2: ED attendances by location of incident and month, August 2010 to July 2011²

Location	Aug	Sep	Oct	Nov	Dec	Jan	Feb	Mar	Apr	May	Jun	Jul	Total	%
Home	5427	5327	5384	5252	4776	5489	4948	5375	5315	5668	5447	5553	63961	76
Public space	918	855	890	754	1074	760	620	828	769	747	685	766	9666	11
Other	604	589	585	462	949	674	638	666	661	623	573	585	7609	9
Work	282	281	249	269	215	190	249	236	209	215	256	244	2895	3
School	***	22	14	25	13	19	17	30	14	19	10	<10	193	0
Walton Prison	9	8	14	12	17	20	10	12	14	12	<7	<6	139	0
Altcourse Prison	<7	7	***	6	10	8	8	<8	10	6	10	7	89	0
In patient – Aintree ED	8	10	***	13	12	8	10	***	6	7	***	***	83	0
Total	7255	7099	7142	6793	7066	7168	6500	7157	6998	7297	6988	7172	84635	100

Table 3: Fall attendances by location of incident and month, August 2010 to July 2011²

Fall location	Aug	Sep	Oct	Nov	Dec	Jan	Feb	Mar	Apr	May	Jun	Jul	Total	%
Home	391	372	399	407	440	390	384	381	367	396	397	432	4756	54
Public space	292	199	220	199	509	245	157	196	191	181	174	220	2783	31
Other	89	85	93	55	121	79	48	57	64	56	65	73	885	10
Work	46	41	29	41	51	20	30	29	21	23	11	26	368	4
School	***	6	***	5	***	***	***	6	***	***	***	***	32	0
In patient – Aintree ED	***	***	***	***	***	***	***	***	***	***	***	***	6	0
Walton Prison	***	***	***	***	***	***	***	***	***	***	***	***	<6	0
Altcourse Prison	***	***	***	***	***	***	***	***	***	***	***	***	***	0
Total	819	703	744	708	1128	739	620	669	647	658	648	753	8836	100

Table 4: Assault attendances by location of incident and month, August 2010 to July 2011²

Assault location	Aug	Sep	Oct	Nov	Dec	Jan	Feb	Mar	Apr	May	Jun	Jul	Total	%
Public Space	130	121	114	72	85	102	89	91	109	95	84	83	1175	51
Home	37	38	46	47	27	56	36	41	42	41	57	48	516	22
Other	54	35	43	35	49	63	40	42	38	37	34	43	513	22
Work	10	***	5	8	6	5	11	7	***	***	6	5	74	9
Altcourse Prison	***	***	***	***	***	***	***	***	***	***	***	***	10	0
Walton Prison	***	***	***	***	***	***	***	***	***	***	***	***	10	0
School	***	***	***	***	***	***	***	***	***	***	***	***	<8	0
In patient – Aintree ED	***	***	***	***	***	***	***	***	***	***	***	***	***	0
Total	232	201	213	164	168	228	177	185	197	180	182	181	2308	100

Table 5: ED attendances by arrival mode of incident and month, August 2010 to July 2011²

Arrival Mode	Aug	Sep	Oct	Nov	Dec	Jan	Feb	Mar	Apr	May	Jun	Jul	Total	%
Private transport	3296	3233	3274	3070	3013	3192	3076	3376	3401	3657	3419	3572	39579	47
Ambulance	2589	2529	2566	2485	2740	2733	2315	2641	2513	2558	2453	2505	30627	36
Taxi	773	767	739	696	741	625	598	612	578	579	605	624	7937	9
Public transport	290	282	276	255	249	300	205	233	201	204	218	185	2898	3
Walked	199	188	201	180	167	181	156	141	151	147	149	156	2016	2
Other/unknown	43	51	39	53	91	86	82	96	98	97	90	70	896	1
Police	55	44	<44	45	51	38	56	49	50	55	<50	53	588	1
St John's ambulance	10	5	***	9	14	13	12	9	6	0	<6	7	94	0
Total	7255	7099	7142	6793	7066	7168	6500	7157	6998	7297	6988	7172	84635	100

Table 6: Discharge method of ED attendances by month, August 2010 to July 2011²

Discharge method	Aug	Sep	Oct	Nov	Dec	Jan	Feb	Mar	Apr	May	Jun	Jul	Total	%
Admitted to hospital	2509	2636	2610	2575	2667	2737	2501	2728	2611	2718	2619	2611	31522	37
Discharged	2154	1827	1942	1819	2011	2123	1890	2069	2247	2315	2324	2176	24897	29
Discharged to care of General Practitioner	806	908	894	863	693	563	545	569	586	513	434	510	7884	9
Discharged to other Health Care Provider	607	612	651	606	546	714	677	798	526	705	621	776	7839	9
Fracture clinic	311	301	293	276	414	281	254	300	321	308	257	339	3655	4
Patient left department	335	291	224	165	218	209	154	179	223	234	249	273	2754	3
ED clinic	182	162	148	122	135	110	118	137	118	142	136	140	1650	2
Physiotherapy ED	89	107	101	138	99	122	90	116	98	119	96	104	1279	2
Own discharge	95	68	77	59	67	84	68	65	58	47	66	63	817	1
Patient did not answer when called for treatment	59	54	70	46	83	84	94	74	83	56	50	44	797	1
Ear/nose/throat	38	47	55	45	35	50	35	41	50	38	51	41	526	1
Ophthalmology clinic	21	28	30	27	19	13	17	23	24	29	26	38	295	0
Died in department	19	18	21	16	29	27	23	19	21	16	18	12	239	0
Discharged to dentist	***	***	***	***	13	18	14	15	14	39	21	21	155	0
Maxillary facial unit	<6	11	8	12	15	13	10	10	11	6	***	10	115	0
Police custody	8	12	5	8	6	11	***	5	***	***	9	10	84	0
Sent to theatre	13	13	10	11	8	***	***	***	***	***	***	***	74	0
Other/unknown	***	***	***	***	***	***	***	***	***	***	***	***	19	0
Transfer to ward	***	***	***	***	***	***	***	***	***	***	***	***	16	0
Falls clinic	***	***	***	***	***	***	***	***	***	***	***	***	<15	0
Brought in dead	***	***	***	***	***	***	***	***	***	***	***	***	***	0
Total	7255	7099	7142	6793	7066	7168	6500	7157	6998	7297	6988	7172	84635	100

Author: Jennifer Brizell, Published February 2013

For further information contact: Val Upton, Centre for Public Health, Research Directorate, Liverpool John Moores University, 2nd Floor Henry Cotton Campus, 15-21 Webster Street, Liverpool, L3 2ET

Tel: 0151 231 4500 Email: j.s.brizell@ljmu.ac.uk

Website: www.tiig.info (please note data requests should be made through the website)